

# FACTIVITY

## SPECIFICATION SHEET

### ■ APPLICATIONS SOFTWARE FIT

FACTIVITY is a manufacturing factory floor system which helps dynamically control your shop floor, measure your productivity and respond quickly to changing customer and floor requirements, so your business can compete better on the basis of time, cost and quality.

With FACTIVITY, you can identify and solve problems and “keep score” with a variety of real-time reports and production metrics.

### ■ EASE OF USE

FACTIVITY is a graphical, easy-to-use tool that provides shop-floor personnel, engineers and production management with visibility into, and control over, factory resources and the production process.

### ■ VISIBILITY

That visibility and control will give you the capability to transform your manufacturing operation into a series of clearly defined, measurable and repeatable practices that can provide your business with a competitive advantage in operational efficiency, response time, and customer service.

### ■ SHOP FLOOR FOCUS

FACTIVITY is designed to operate in the time frame of the factory floor where parts, resources and labor come together and have to be managed for efficient, flexible production.

Unlike ERP, office and administrative systems, **FACTIVITY is a dynamic tool**, designed to handle the constantly changing environment of the shop floor, where things happen quickly and change is continuous. FACTIVITY helps you move products through the factory floor as quickly as possible, concentrating on machine run time and labor efficiency--where value is added and profit made--and by tracking, recording and analyzing performance metrics to help you improve your process.

Under-used capacity and excess material mean waste. Waste means higher cost. Too little capacity and material shortages mean delays. Delays mean broken commitments and unhappy customers.

### ■ IMPROVE CUSTOMER SERVICE

FACTIVITY helps you control your factory floor, as well as, communicate with customer service and sales. When situations change, FACTIVITY gives you the flexibility to work around the changes and predict the impact on delivery dates. If you are a make-to-order shop, customer service can make more realistic promises. If you are a make-to-stock shop, the sales department can count on increased product availability.

### ■ REAL TIME SHOP FLOOR UPDATES

On the factory floor, the dispatch list (work center schedule) indicates to operators the parts that need to be worked on. Parts are displayed in priority sequence.

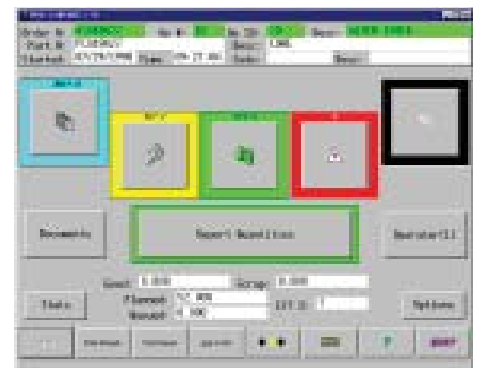
As status changes - work is completed, problems occur, order priorities change - the dispatch list is updated to reflect those changes.

An employee logs into and out of activities at the touch of a button on the screen. **Labor time is captured with minimal effort**, in real-time, improving data integrity. The touch of a button displays the activities by resource area. Multiple employee teams/crews and a single employee running multiple machines are both supported.

### ■ EASY-TO-USE

Once a job is finished, operators enter the completion data - quantity made, quantity scrapped (and reason) - either through a keyboard, mouse or via touchscreens at their terminals.

FACTIVITY can segment the production floor into reporting centers for efficient collection of production data. Each reporting station can be individually tailored to the work areas requirements.



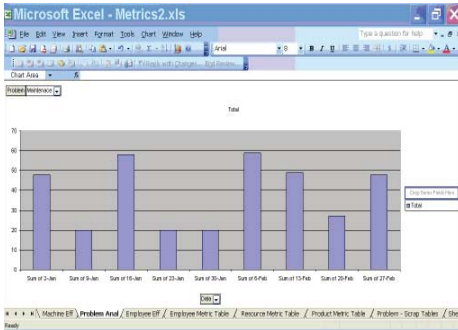


## Late - Production

- All Orders (sorted by lateness)
- Excessive Idle Time

## Down-Time

- Current Problem List  
(active problems)
- By Date, Employee, Resource



## Part

- Part Efficiency (standard analysis)
- WIP Tracking (by order/lot/batch)

## Resource

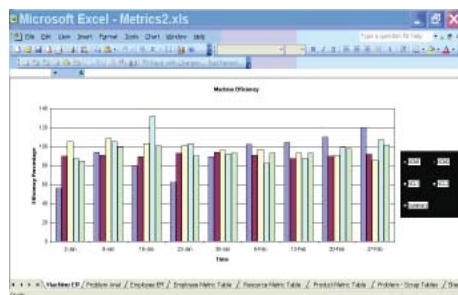
- Dispatch List (schedules of orders and parts)
- Resource Efficiency Report
- Average Queue Hours (sort by queue time)

**FACTIVITY** supports a variety of performance metrics produced from a historical data base. Presented in both graphical and spreadsheet format, these metrics are easy to use.

### 1. Labor Efficiencies

- Identifies Bottlenecks
- Standards Analysis

### 2. Machine Performance



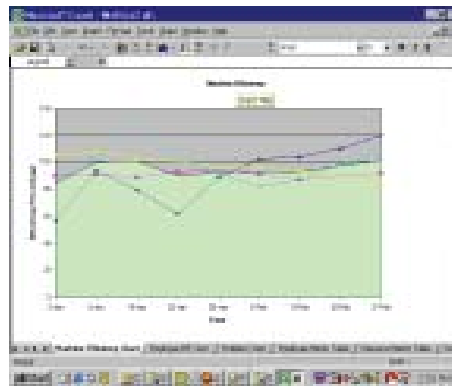
### 3. Down-Time Analysis

- Eliminate waste time

### 4. Scrap Analysis

### 5. Part Analysis

- Lateness Analysis
- Standard Analysis



## ■ REDUCE MANUFACTURING COSTS

**FACTIVITY** functions as a process improvement tool, allowing you to make sense of all the data being collected--beyond production reporting of quantities good/scrapped--it lets you manage your production process so you can identify areas for making improvements in cost, time and quality.

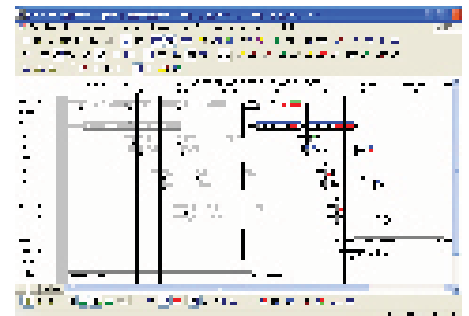
**FACTIVITY** provides **fast finite scheduling through an additional module**. This module can be installed stand-alone or integrated with the floor system. Integration into the floor system ensures real-time updates so the scheduler can work with the most current data when rescheduling the floor. In addition, the distribution of the schedule can be accomplished at any time during the day at the touch of a button. Linking the scheduler to the floor helps improve the communications and provides a vehicle by which to "tie" the floor to the schedule.

This module uses a graphical "white board" approach. With resources running down the left side of the screen and expandable time scales across the top, this system allows colorful, easily identifiable bars to represent work on the floor.

Scheduler has three modes of scheduling. First, work can be scheduled by drag-and-drop from/to machines and work centers, with the work available on the electronic planning board. This is the main manual planning method and includes quick access via lists of work on individual machines.

The second scheduling mode, semi-automatic scheduling, is offered when work is placed onto the scheduler's board. Work can be placed by due date, at end/beginning of current work or at a particular location.

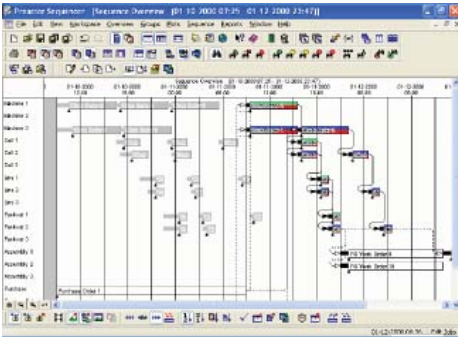
Third, the work can be sequenced automatically by one or several (up to seven) user-definable attributes. The sequencing can group, rank and match work to provide the appropriate method of sequencing. Due date/time and priority are also automatically included, with weightings.



The Scheduler's "what-if" feature helps you work around unanticipated changes. This helps reduce the need for expensive outsourcing, safety stock and premium transportation, while improving machine and labor utilization.

## ■ ROBUST INTERFACE

FACTIVITY is designed to work well with a variety of off-the-shelf and customized software packages. FACTIVITY can receive order information electronically, such as customer specific requests from upstream ERP, as well as pull-in data from factory floor machine monitoring equipment and PLC's.



FACTIVITY can be interfaced with other applications as well. For example, FACTIVITY can be linked to Computer Aided Design (CAD) software.

FACTIVITY's open architecture and interfaces can help you achieve full control in your manufacturing operation. It extends your currently installed manufacturing system, to provide functionality to shrink cycle time and improve customer delivery time.

## ■ CONNECTIVITY

FACTIVITY allows connectivity through networks and integration of workstations and machines. FACTIVITY provides proven interface capability to connect to your other installed computer systems as required.

## ■ SYSTEM INTEGRITY

The system runs 24 hours a day, 7 days a week. Back-ups are supported in an online process by a server on the network.

## ■ A COMPANY WITH EXPERIENCE

FACTIVITY has been implementing manufacturing and business systems for the manufacturing community for over 20 years. Our mission, from the outset, has been to deliver business solutions that help manufacturers become more competitive and more successful in their marketplace.



# FACTIVITY

23400 Mercantile Road

Cleveland, OH 44122

PH: 216.514.5141

Visit us @ [www.factivity.com](http://www.factivity.com)

Email us @ [info@factivity.com](mailto:info@factivity.com)